

Key Question

What are the habitats of polar bears and penguins like?

Mathematical Understanding

Counting, partitioning and calculating - We will explain what each digit in a 2 digit number represents, e.g. $27 = 20 + 7$ and is explained as 2 tens and 7 units.

We will calculate the value of an unknown number in a number sentence, e.g. $30 - ? = 24$. Therefore $24 + ? = 30$.

Securing number facts, understanding shape -

We will practice recall of addition and subtraction facts for numbers to 20.

We will sort, make and describe shapes in different positions and orientations, referring to their properties.

Science and Technological Understanding

We will explain and develop our ideas and findings about Arctic and Antarctic animals, their behaviour and their environment. We will describe these animals, the places they are found and the conditions they need to survive. **ICT** - we will research and communicate our research for our topic, through a variety of programs.

Home Task: Remember to use the Purple Mash pages from our website

Home Task: Help your child to learn and practice their number bonds, e.g. $2 + 8 = 10$. $12 + 8 = 20$

Understanding English, Communication and languages

Pie Corbett - we will explore and innovate with our own ideas the story of Cat, Bramble and Heron.

Poetry - we will analyse, evaluate and criticise a range of uses of language in order to draw out meaning, purpose and effect when writing our own riddles.

Non-fiction - we will explore writing for a variety of purposes when we write explanations about the habitats of animals from cold climates.

Narrative - we will talk about thoughts, ideas and opinions when reading the extended stories of Horrid Henry.

Home Task: Please continue reading with your child at home

Understanding the arts

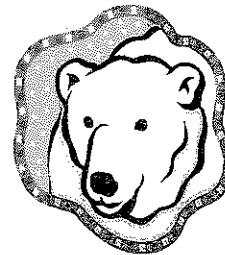
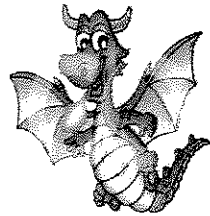
CLASS ASSEMBLIES - week commencing 6.2.11

Music - we will explore altering our voices (dynamics) and starting points (rounds) when singing and performing simple songs as a year group.

Art - we will explore working with different materials, such as clay and felt, to make 3D models of animals. We will make 3D models of Tudor houses to represent the scenes from the fire of London.

Fire and Ice

Year 2 Spring 1 2012



Religious Education

23.1.12 marks the Year of the Dragon. We will explore the Chinese New Year story and look at the way this festival is celebrated.

Following on from Christmas, we will examine the life of Jesus and explore some of the stories Jesus told.

Historical, Geographical and social Understanding

ENRICHMENT - BISHOP'S HOUSE VISIT

History - we will be looking at the story of the Fire of London, examining and analysing some of the ways in which the past has been represented.

Geography - we will investigate, analyse and communicate our research into the habitats of animals and people from colder climates.

Understanding physical development, health and wellbeing

PE - we will create, compose and choreograph a dance in response to the Chinese animal race story, exploring how different animals move.

SEAL - For the New Year we will look at resolutions and linking to this we will look at Going for Goals. 13.1.12 - we will have a special SEAL day to focus on this aspect of personal development.